

## North American Operations

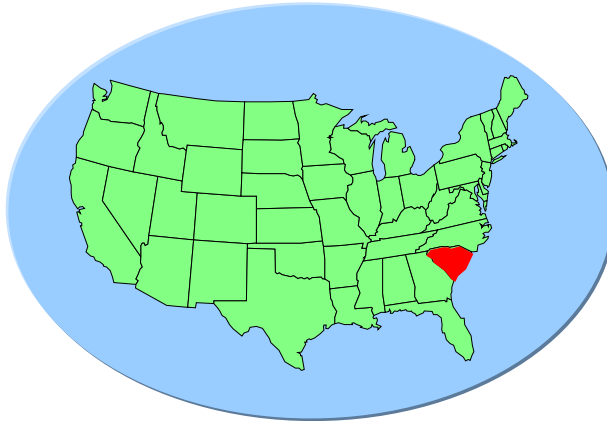
---



**KI**

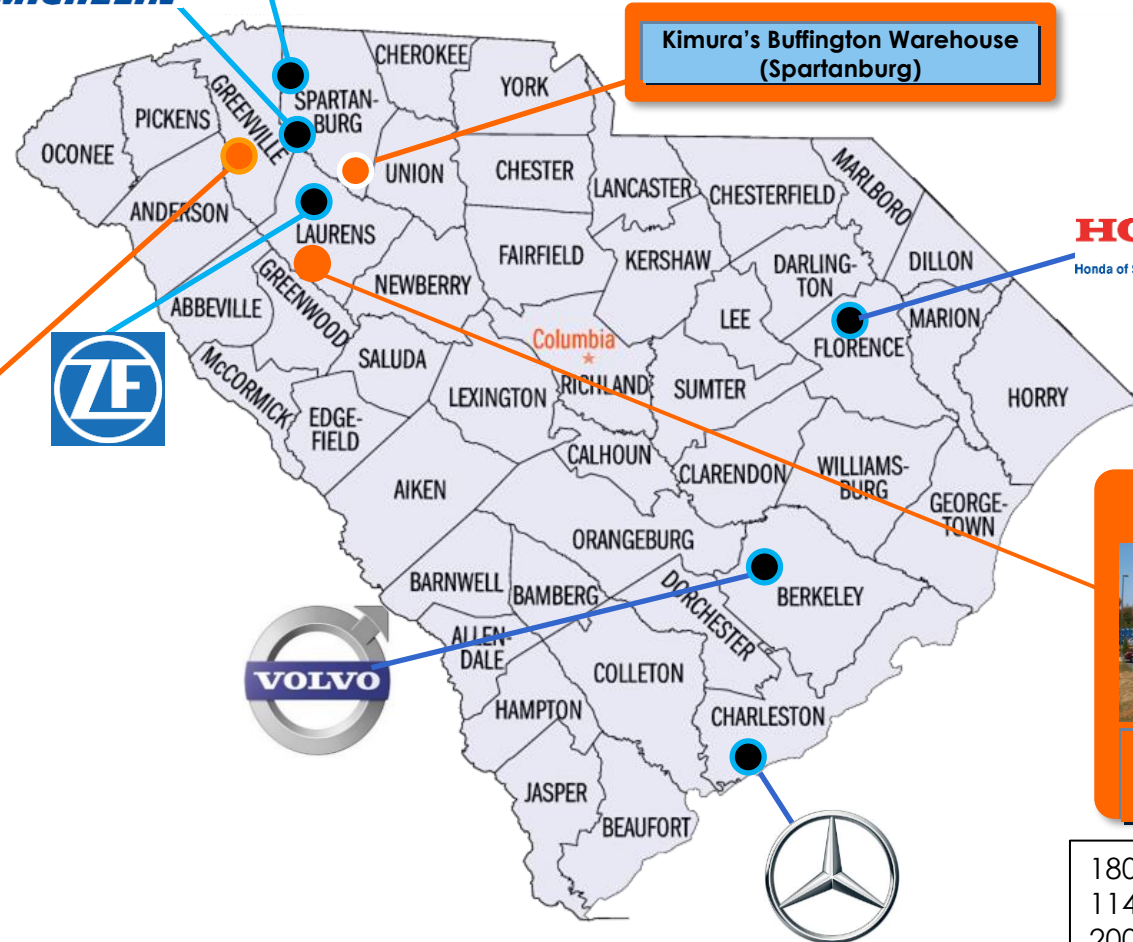
**KIMURA, INC.**

### Our Region



- South Carolina is predominantly a Non-Union State
- The Upstate of SC Ranks on Multiple Top Ten Lists

**Convenient to Major Roadways:**  
 I-385  
 I-85  
 I-26  
 Tollway 185



**Kimura's Buffington Warehouse  
(Spartanburg)**

**HONDA**  
 Honda of South Carolina Mfg., Inc.



**Matrix Warehouse  
(Piedmont)**

214 Miles to Charleston, SC  
 113 Miles to Charlotte, NC  
 146 Miles to Atlanta, GA  
 198 miles to Greensboro, NC



**Steel Container Plant  
(Laurens)**

180 miles to Charleston, SC  
 114 miles to Charlotte, NC  
 200 miles to Greensboro, NC  
 167 miles to Atlanta, GA

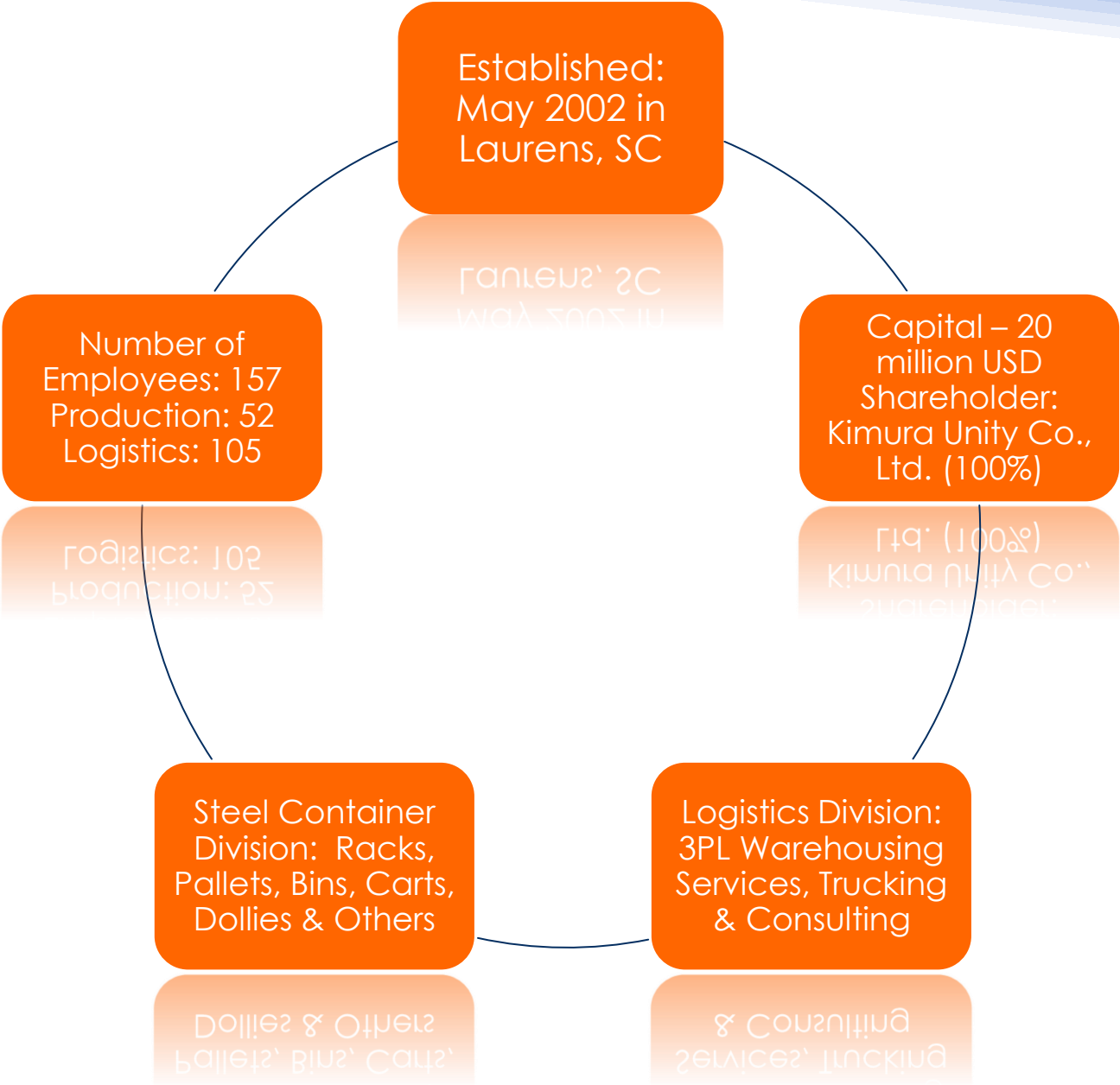
**Mercedes-Benz Truck Plant**



HQ & Steel Pallet Production Plant (Laurens, SC)



Logistics Center (Piedmont, SC)



# AREAS OF FOCUS

Three orange hexagons of increasing size are arranged diagonally from the top-left towards the bottom-right of the slide.

## Logistics Services

Secure, Full-Service Warehousing  
Operation:

- Quality Support
- Inventory Control
- Repack Services
- High Rack System (Buffington Warehouse)

## The Systems We Use:

- SAP Management Software
- Warehouse Management System (WMS)

## Steel Pallet Manufacturing

Producers of High Quality, Steel:

- Racks / Racking Systems
- Containers
- Carts / Dollies
- Roller Conveyors
- Collapsible Bins

# Logistics Services

---



# LOGISTICS SERVICES

## MATRIX WAREHOUSE OVERVIEW



- In Piedmont, SC, Kimura owns 80 acres; our Matrix Logistics Operation utilizes 40 of these acres.
- Our Matrix Warehouse is at 100% Capacity/Occupied/Sold
- Of our 100 Trailer Parking Spaces, 70% is Sold.

The Matrix Warehouse runs a Cross-Dock Operation; from the Right Side, we Receive; from the Left Side, we Ship to Customers.

# LOGISTICS SERVICES

## 3PL Services

- Receive
- Store
- Ship

## QC Support

- Quality Mgmt.
- Inspection
- Assembly

## Inventory Control

We utilize WMS to manage inventory.

## Repack Services

Freight is transferred from shipping containers to customer's containers.

## High Rack System

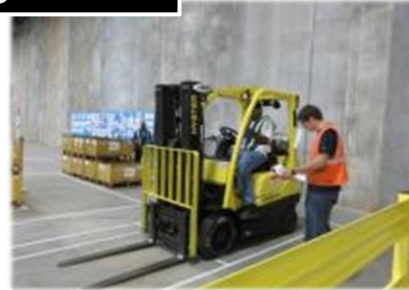
Our Buffington Warehouse utilizes high reach trucks.

### Accessibility:

- Matrix Warehouse – 24/7
- Buffington Warehouse – 1 Shift
- K4 Warehouse – 2 Shifts, Mon. – Fri.

# LOGISTICS SERVICES

**Training DOJO**



**Storage Area**



**Load/Unload**



**Put-Away**



**Charging Area**



**Containment**



**Picking & Packing**



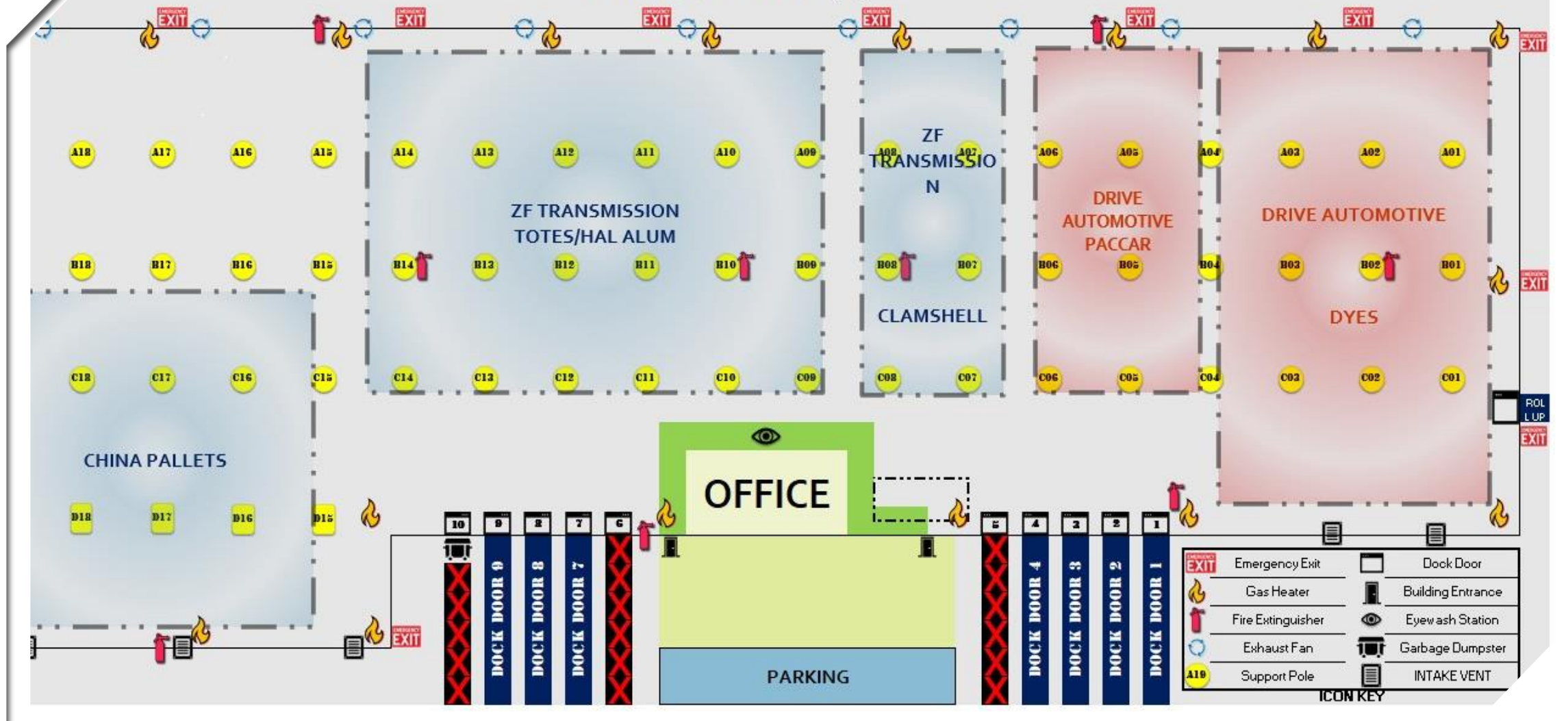
**Shipping**

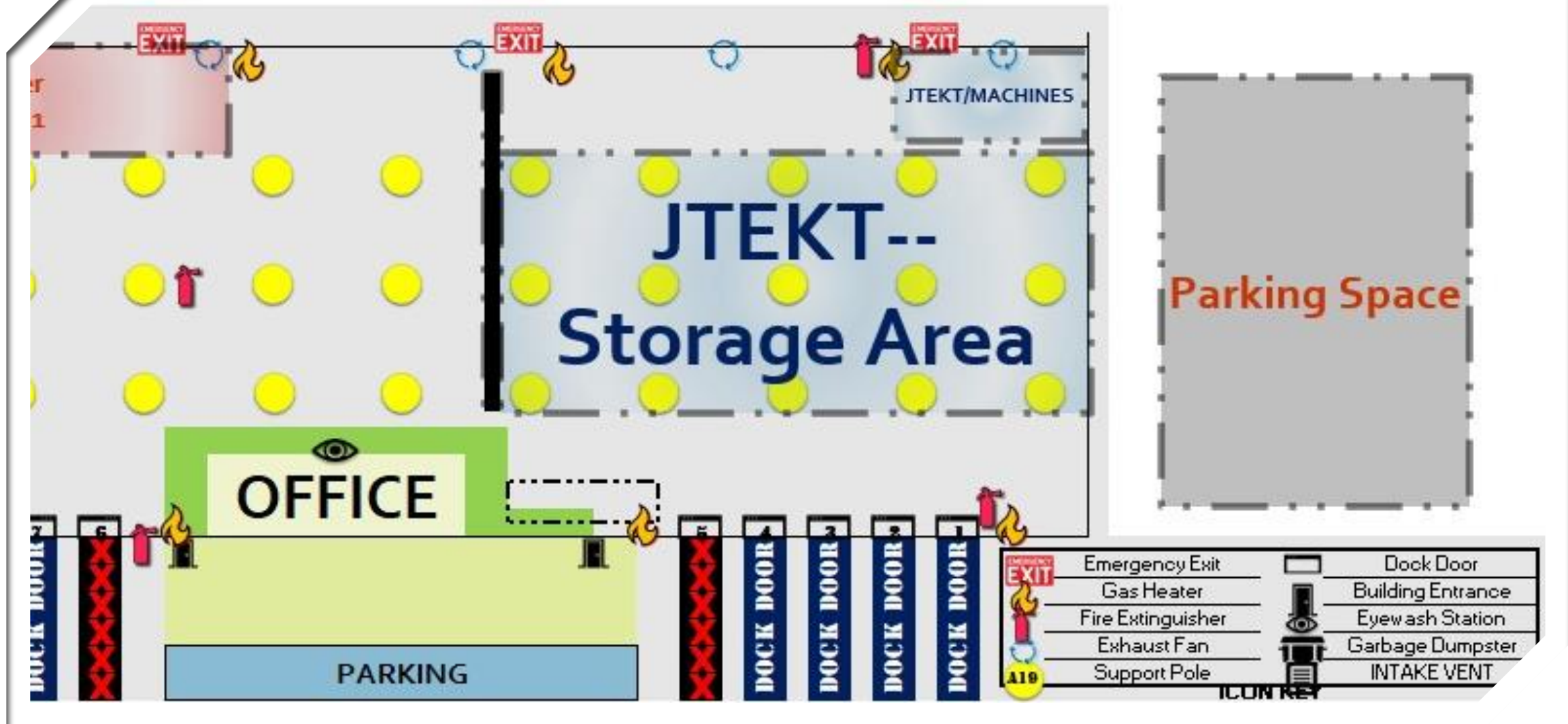




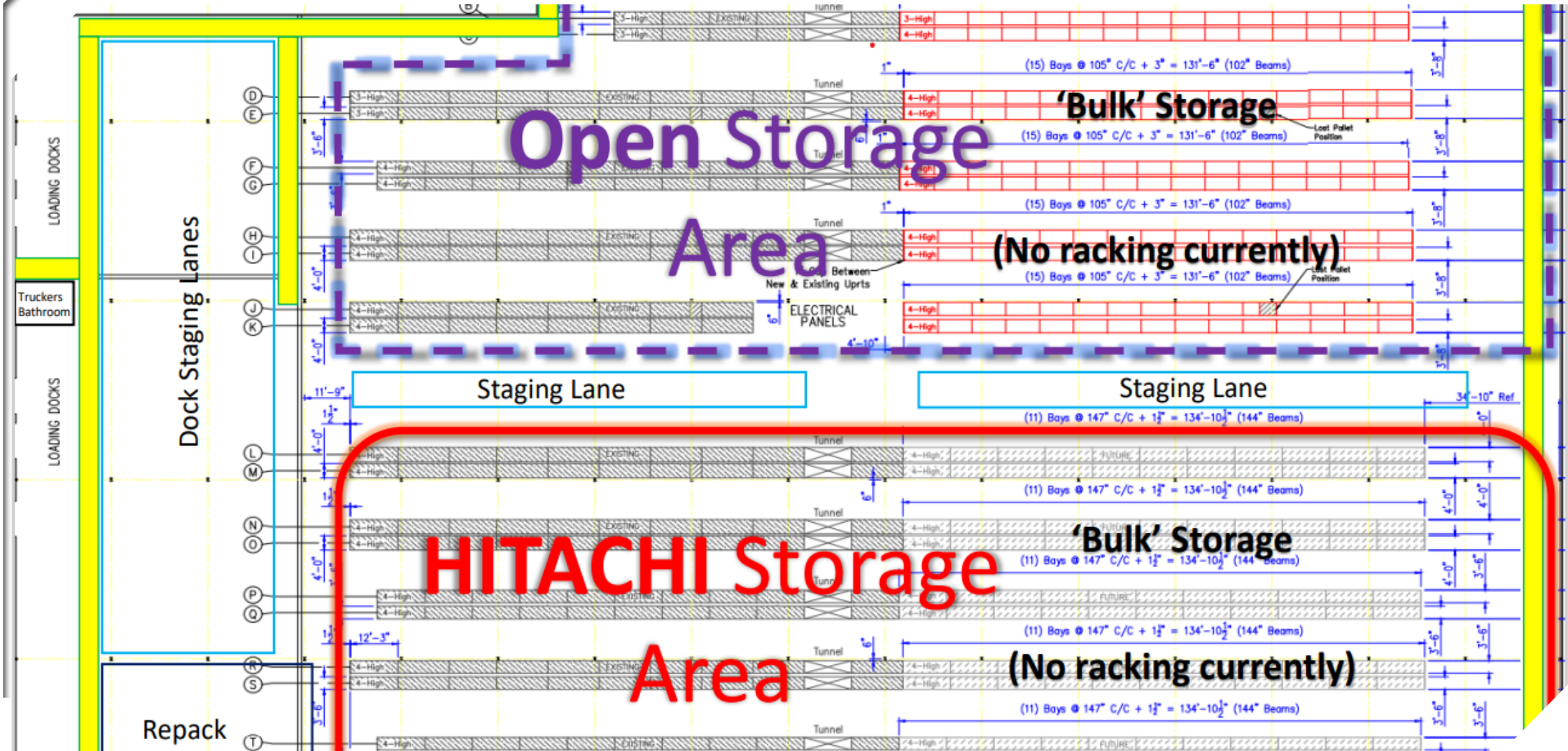
[illegible]

### K4 LAYOUT - CURRENT 02/04/2022











## Our Logistics & Steel Container Customers:

